

Surface Area Management Construction Authorization

Commission
February 8, 2022

Project Scope

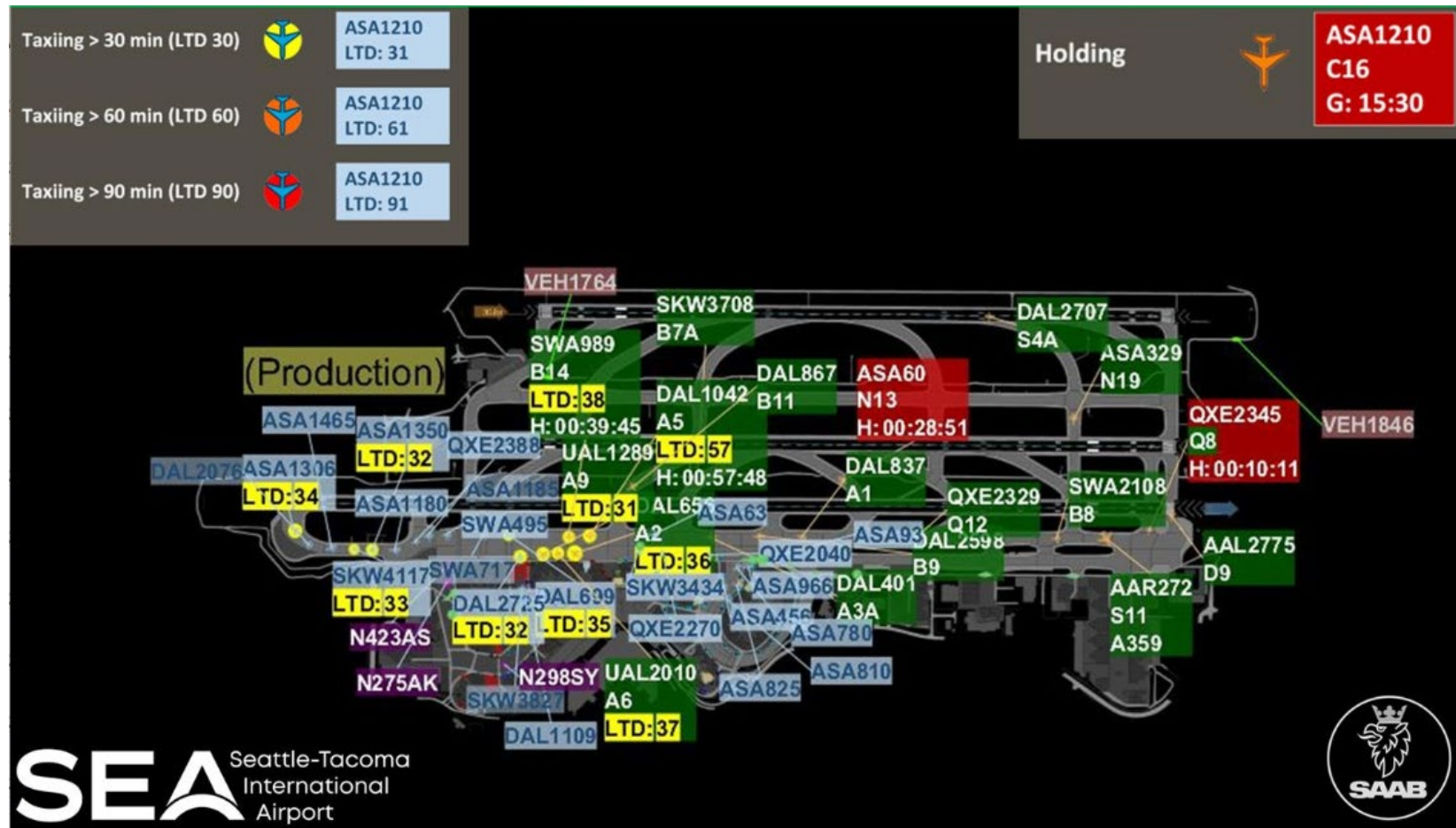
- Procure and implement a surface area management system to improve situational awareness and business performance for the Sea-Tac Airport ramp, gate, and aircraft parking areas.
- Design and construct power and data points of connection for new cameras and sensors located throughout the ramp, gate, and aircraft parking areas to support the SAM system

Project Objectives/Benefits

- Improve efficiency by detecting taxi times and the underlying causes of delays and airfield bottlenecks, synchronizing ground traffic flow with FAA's airspace procedures to set taxi routes, and alerting staff of delays so we can more proactively mitigate issues.
- Improve safety by providing data to determine incident root cause and develop mitigation measures and intercepting potential hazards before they become an incident.
- Improve legal defense by providing forensic data associated with incidents. This may include video, vehicle speed, erratic driving patterns, and operating conditions.
- Improve business performance by showing real-time gate usage to reduce conflicts, track progress of deicing equipment and match schedule with aircraft readiness, and more accurately record hardstand usage for billing purposes.

Surface Area Management System

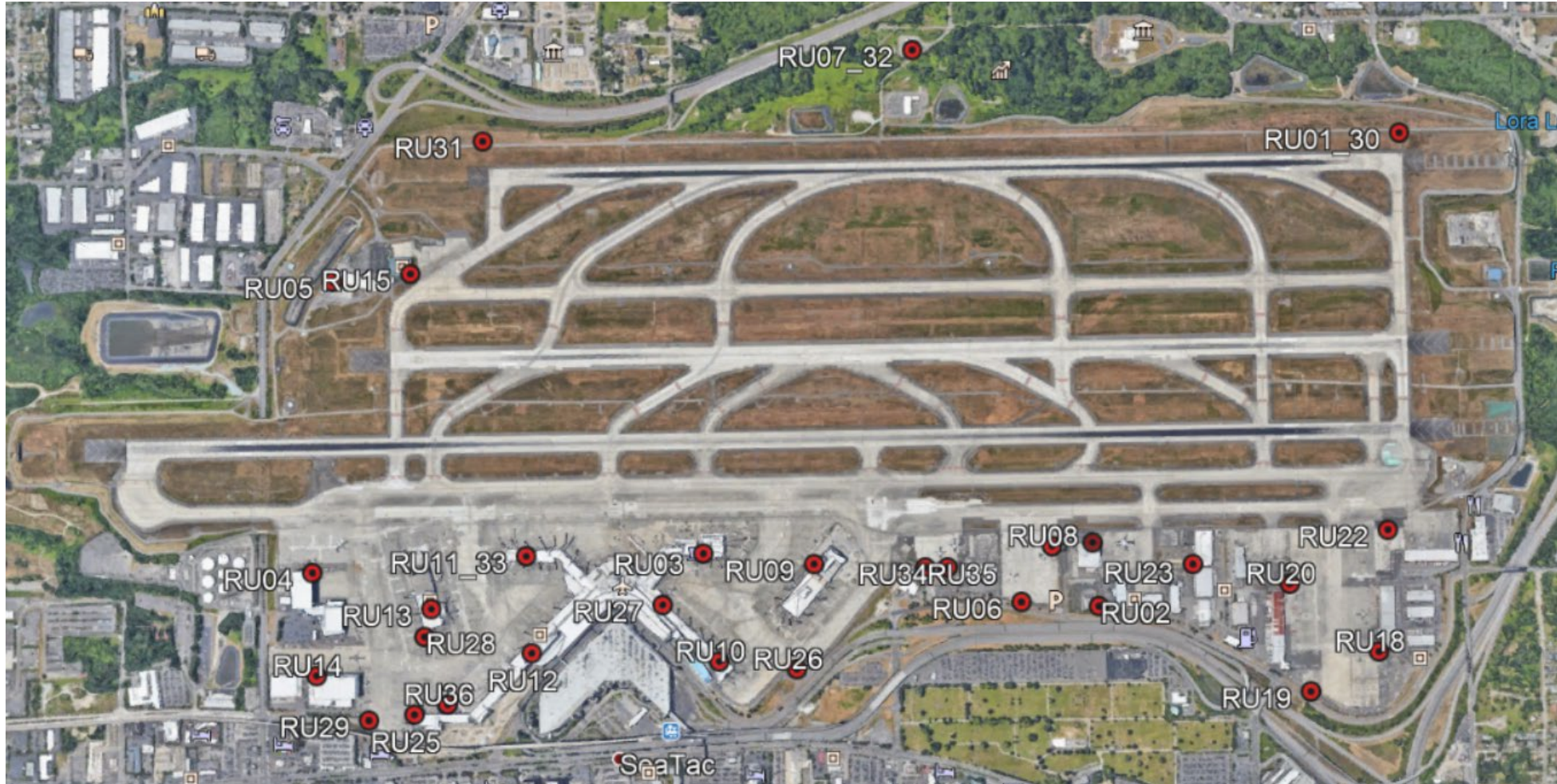
"Everyone can see the problem through the same lens." -SAMS Team



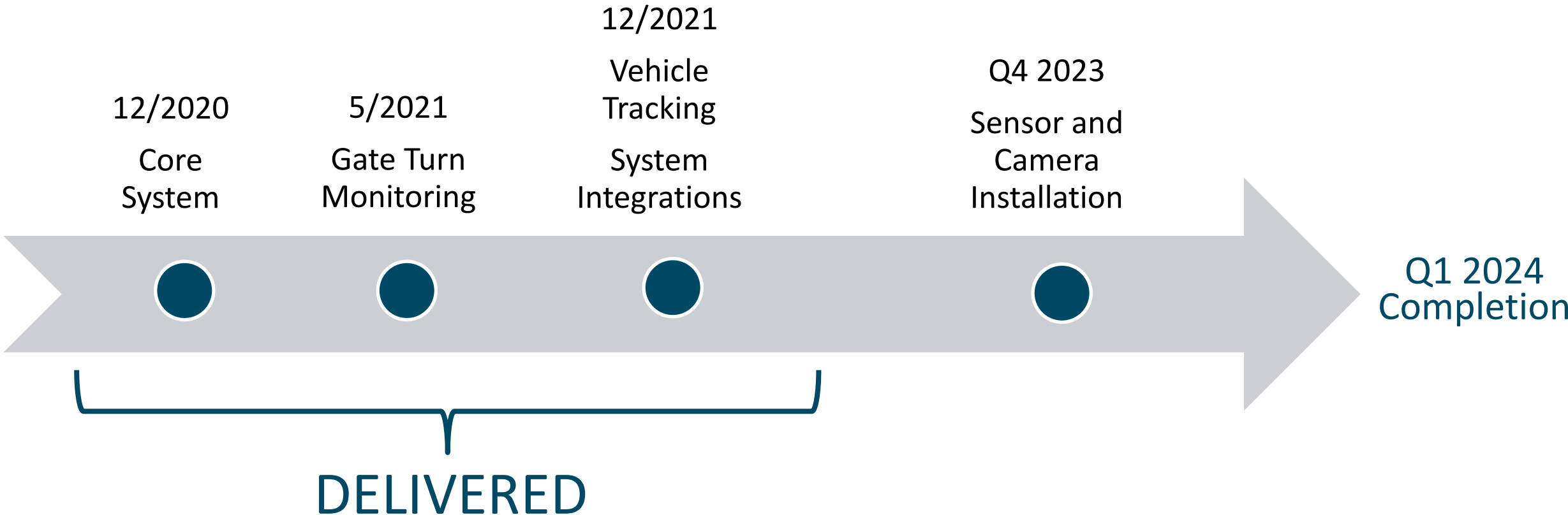
Sunday 9/26/21
@12:25 local

Phase 4 Sensors

 Sensor Location



Schedule



Budget

Cost Breakdown	Original Budget (Pre-Contract & Design)	June 2019 Authorization	Budget Increase	Requested Authorization	Total Project Budget
Capital					
Hardware/Software/Vendor Services	\$2,623,000	\$2,623,000	\$0	\$0	\$2,623,000
Port Labor	\$934,000	\$854,000	\$0	\$80,000	\$934,000
Sensor/Camera Installation*	\$2,643,000	\$905,000	\$6,900,000	\$8,638,000	\$9,543,000
Total Capital	\$6,200,000	\$4,382,000	\$6,900,000	\$8,718,000	\$13,100,000
Expense					
Training	\$200,000	\$200,000	\$0	\$0	\$200,000
Spare Parts	\$200,000	\$200,000	\$0	\$0	\$200,000
Total Expense	\$400,000	\$400,000	\$0	\$0	\$400,000
TOTAL PROJECT	\$6,600,000	\$4,782,000	\$6,900,000	\$8,718,000	\$13,500,000